



**Noise Monitoring Result**

**Day Time (0700 - 1900hrs on normal weekdays)**

Location: M1a - Footbridge at EX-Wanchai Harbour Road Sports Centre

Date	Time	Weather	Measurement Noise Level			Baseline Level	Construction Noise Level	Limit Level
			Leq	L10	L90	Leq	Leq	Leq
Unit: dB(A), (30-min)								
28/11/18	10:43	Cloudy	75.8	80.0	69.3	72	73	75
5/12/18	10:00	Fine	76.8	79.6	71.5	72	75	75
14/12/18	15:40	Fine	76.3	78.5	70.6	72	74	75
19/12/18	15:35	Cloudy	78.9	81.2	74.0	72	<b>78</b>	75



**Noise Monitoring Result**

**Day Time (0700 - 1900hrs on normal weekdays)**

Location: M2b - Noon-day gun area

Date	Time	Weather	Measurement Noise Level			Baseline Level	Construction Noise Level	Limit Level
			Leq	L10	L90	Leq	Leq	Leq
Unit: dB(A), (30-min)								
29/11/18	10:10	Fine	68.3	70.6	65.9	68	60	75
5/12/18	13:00	Fine	67.4	69.8	65.4	68	67	75
14/12/18	16:30	Fine	66.5	68.7	64.3	68	67	75
19/12/18	9:30	Cloudy	69.7	71.6	67.1	68	66	75

Location: M3a - Tung Lo Wan Fire Station

Date	Time	Weather	Measurement Noise Level			Baseline Level	Construction Noise Level	Limit Level
			Leq	L10	L90	Leq	Leq	Leq
Unit: dB(A), (30-min)								
29/11/18	11:00	Fine	68.4	70.6	66.2	69	68	75
5/12/18	13:40	Fine	66.4	67.6	64.6	69	66	75
11/12/18	15:50	Fine	66.4	67.1	63.3	69	66	75
21/12/18	13:00	Fine	66.3	68.6	64.7	69	66	75



**Noise Monitoring Result**

**Day Time (0700 - 1900hrs on normal weekdays)**

Location: M4b - Victoria Centre

Date	Time	Weather	Measurement Noise Level			Baseline Noise Level	Construction Noise Level	Limit Level
			Leq	L10	L90	Leq	Leq	Leq
Unit: dB(A), (30min)								
29/11/18	13:32	Fine	65.9	67.5	64.0	67	66	75
4/12/18	10:20	Fine	67.0	68.7	62.5	67	67	75
11/12/18	14:26	Fine	66.4	67.6	63.4	67	66	75
19/12/18	11:05	Cloudy	66.7	68.1	64.2	67	67	75

Location: M5b - City Garden

Date	Time	Weather	Measurement Noise Level			Baseline Level	Construction Noise Level	Limit Level
			Leq	L10	L90	Leq	Leq	Leq
Unit: dB(A), (30min)								
29/11/18	15:30	Fine	71.8	75.7	67.4	68	69	75
4/12/18	08:50	Fine	74.5	77.0	69.4	68	73	75
12/12/18	09:20	Cloudy	71.3	72.8	70.4	68	69	75
19/12/18	14:00	Cloudy	71.5	73.1	69.1	68	69	75

Location: M6 - HK Baptist Church Henrietta Secondary School

Date	Time	Weather	Measurement Noise Level			Baseline Level	Construction Noise Level	Limit Level
			Leq	L10	L90	Leq	Leq	Leq
Unit: dB(A), (30-min)								
29/11/18	16:05	Fine	67.3	69.6	65.5	71	67	70
4/12/18	09:30	Fine	67.7	68.9	64.6	71	68	70
12/12/18	08:45	Cloudy	65.2	67.1	63.8	71	65	65
19/12/18	13:00	Cloudy	64.2	64.8	63.1	71	64	65



### Noise Monitoring Result

#### Day Time (0700 - 1900hrs on normal weekdays)

Location: M7e - International Finance Centre (Eastern End of Podium) (Reference Station)

Date	Time	Weather	Measurement Noise Level			Baseline Level	Construction Noise Level	Limit Level
			Leq	L10	L90	Leq	Leq	Leq
Unit: dB(A), (30-min)								
27/11/18	10:45	Cloudy	66.2	68.1	63.6	67	66	N/A
3/12/18	14:30	Fine	66.3	68.7	64.5	67	66	N/A
10/12/18	15:20	Cloudy	68.5	70.2	66.3	67	64	N/A
18/12/18	15:35	Fine	69.6	71.3	68.0	67	66	N/A

Location: M7w - International Finance Centre (Western End of Podium)

Date	Time	Weather	Measurement Noise Level			Baseline Level	Construction Noise Level	Limit Level
			Leq	L10	L90	Leq	Leq	Leq
Unit: dB(A), (30-min)								
27/11/18	11:20	Cloudy	64.7	66.3	61.9	69	65	75
3/12/18	13:50	Fine	64.6	66.5	62.0	69	65	75
10/12/18	15:55	Cloudy	66.8	69.5	64.6	69	67	75
18/12/18	15:00	Fine	67.3	69.8	65.5	69	67	75

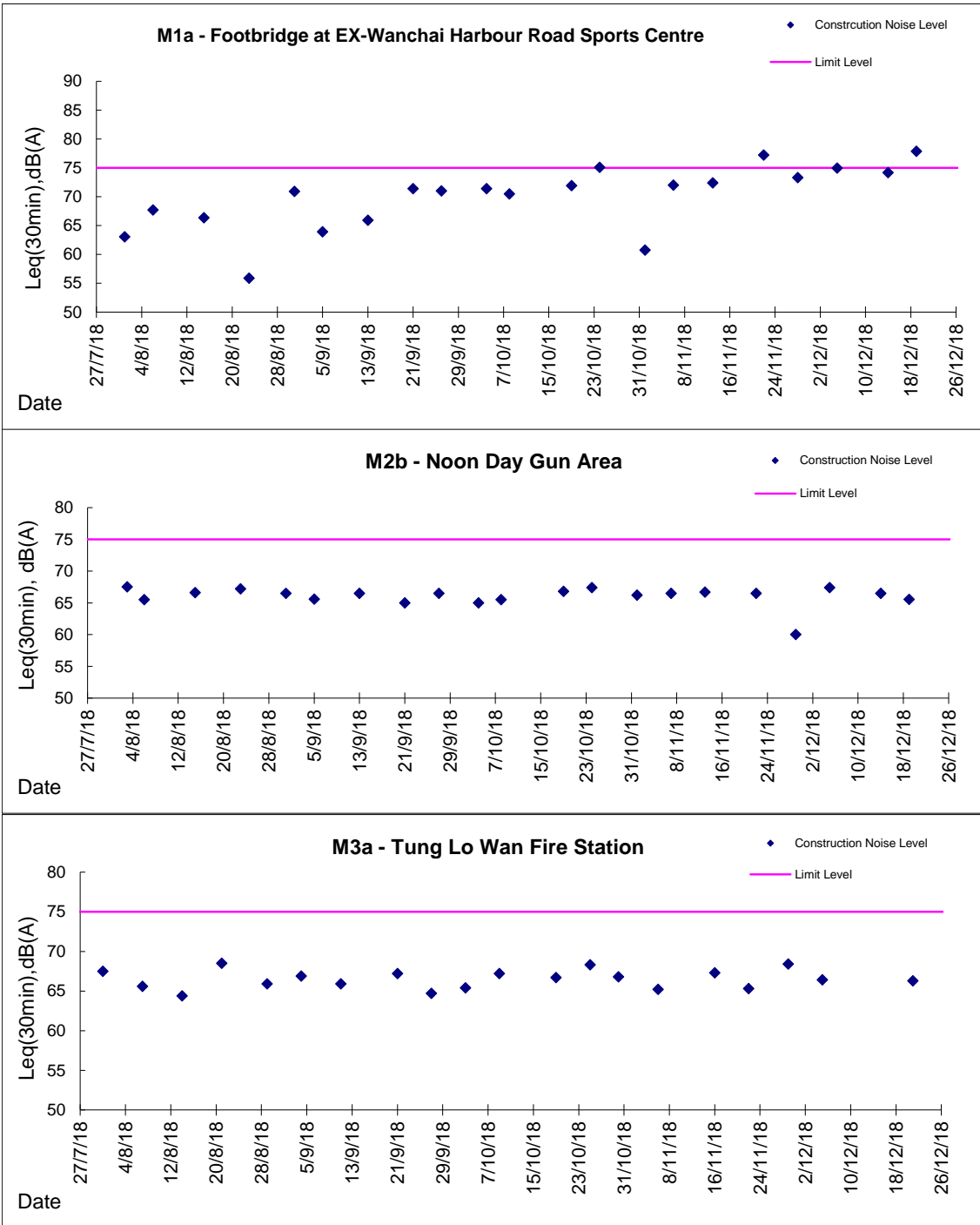
Location: M8 - City Hall

Date	Time	Weather	Measurement Noise Level			Baseline Level	Construction Noise Level	Limit Level
			Leq	L10	L90	Leq	Leq	Leq
Unit: dB(A), (30-min)								
29/11/18	09:10	Fine	60.1	62.7	58.4	64	60	70
3/12/18	15:25	Fine	69.9	75.6	56.8	64	69	70
10/12/18	13:00	Cloudy	60.3	62.4	56.6	64	60	70
18/12/18	16:20	Fine	62.2	64.7	60.3	64	62	70



Graphic Presentation of Noise Monitoring Result

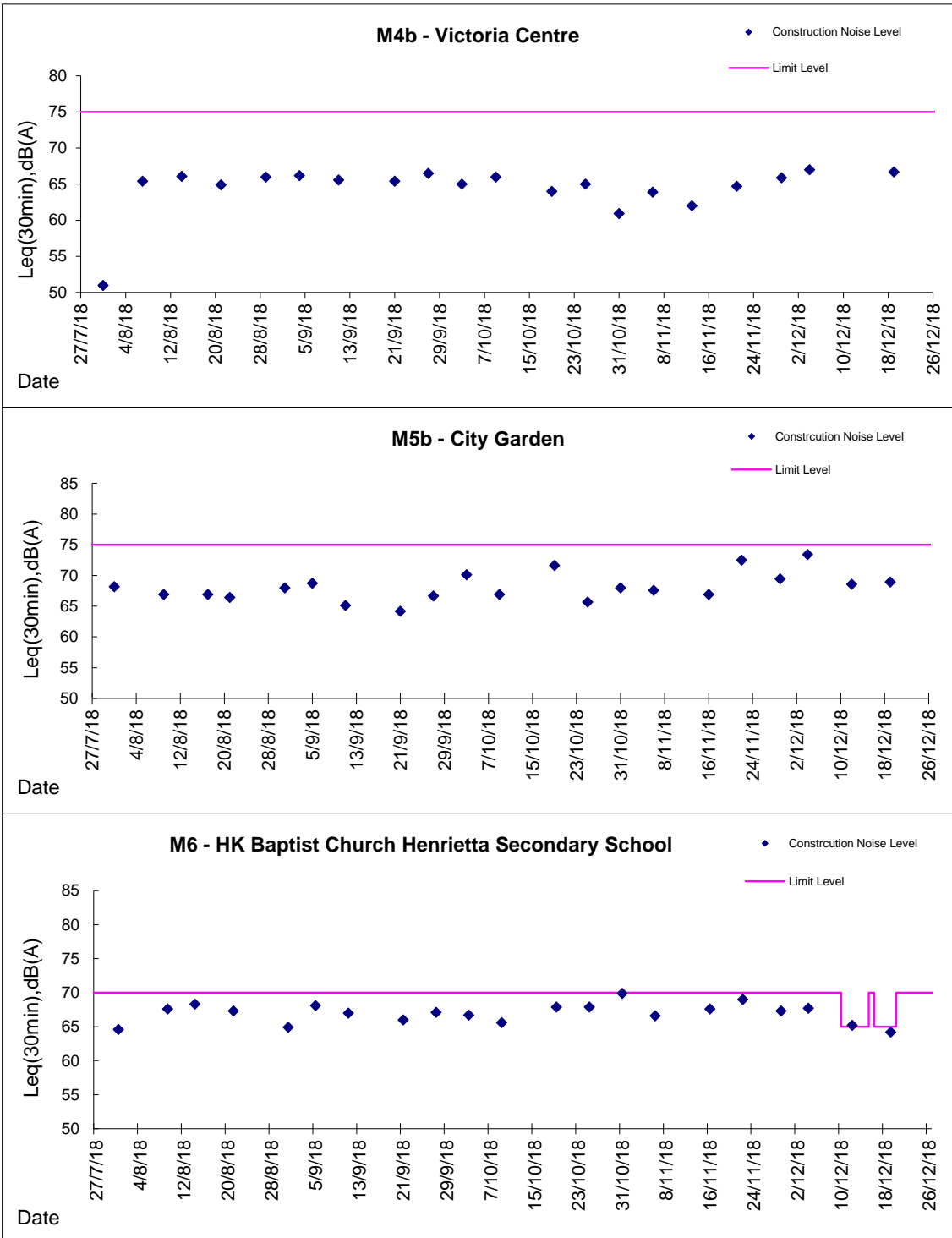
Day Time (0700 - 1900hrs on normal weekdays)





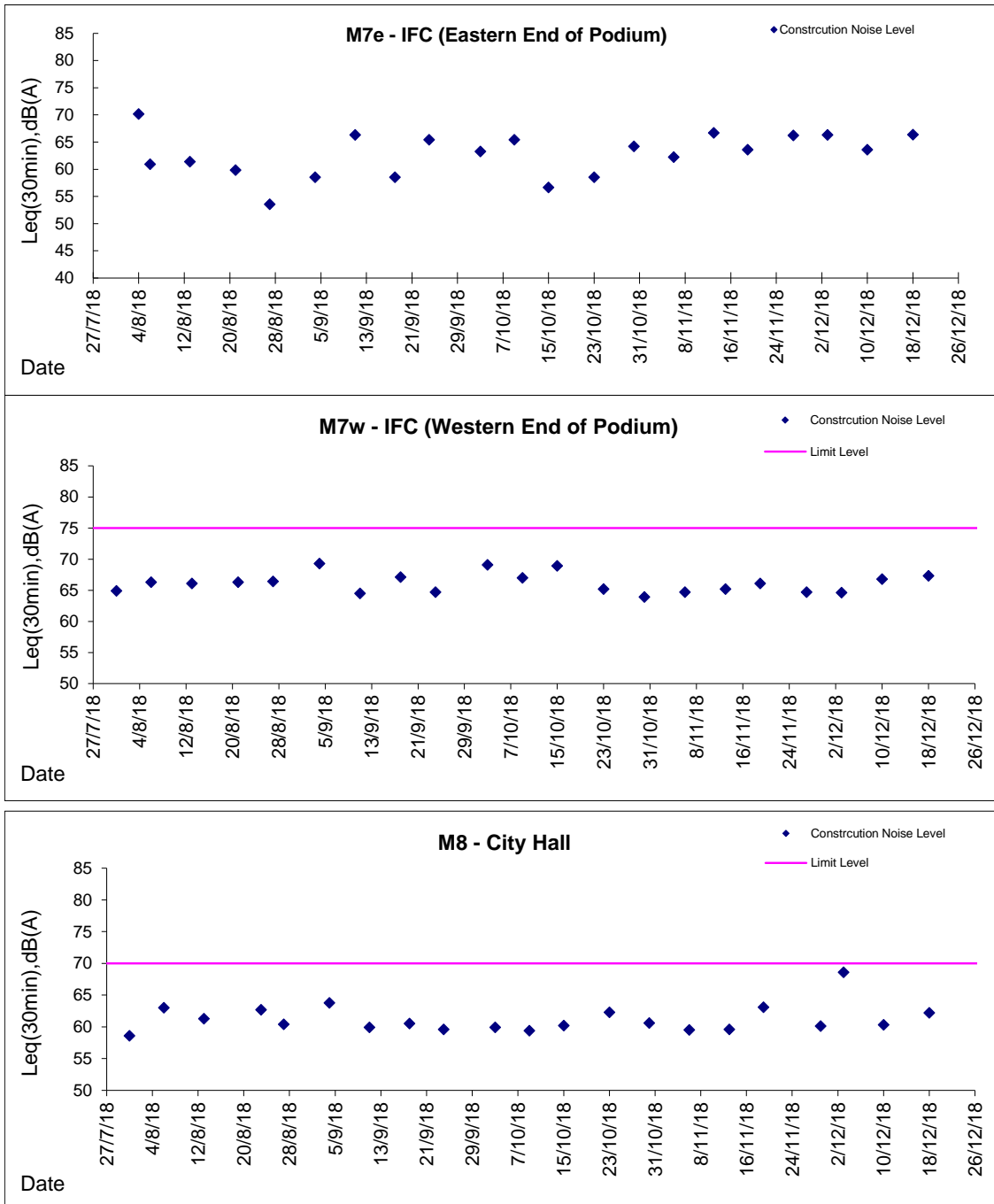
Graphic Presentation of Noise Monitoring Result

Day Time (0700 - 1900hrs on normal weekdays)



**Graphic Presentation of Noise Monitoring Result**

**Day Time (0700 - 1900hrs on normal weekdays)**



\* Remark: M7e - IFC (Eastern End of Podium) is a reference monitoring station